

SPECIFICATIONS

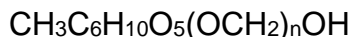


Product Code: 20002

Date: 08/30/2013

RITACAM E-10
INCI Name Methyl Gluceth-10

DEFINITION: RITACAM E-10 is the polyethylene glycol ether of methyl glucose that conforms generally to the formula:



where n has an average value of 10

DESCRIPTION: RITACAM E-10 is a water-soluble liquid moisturizer and emollient. As an ingredient in cosmetic formulations, RITACAM E-10 imparts a smooth and gentle skin feel. Due to its exceptional water retention properties, RITACAM E-10 finds uses in lotions, creams, after-shave products, bar soaps, bath products, hair wave products and cleansing products.

GENERAL DATA:

Physical Form @ 25°C	Pale yellow viscous liquid
Odor	Faint, characteristic
CAS Number	68239-42-9

SPECIFICATIONS:

Color, Gardner	1 Max.
Acid Value	1.5 Max.
Saponification Value	1.5 Max.
Hydroxyl Value	350 – 370
Heavy Metals	20 ppm Max.
Arsenic	2 ppm Max.
Loss on Drying, %	1 Max.

The information contained herein is to our best knowledge true and accurate, but all recommendations or suggestions are made without guarantee, since the conditions of use are beyond our control. RITA CORPORATION disclaims any liability in connection with the use of these data or suggestions.