

# SPECIFICATIONS

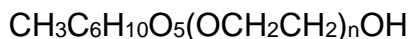


Product Code: 20001

Date: 03/05/2014

## RITACAM E-20 INCI Name: Methyl Gluceth-20

**DEFINITION:** RITACAM E-20 is the polyethylene glycol ether of methyl glucose that conforms generally to the formula:



where n has an average value of 20

**DESCRIPTION:** RITACAM E-20 is a water-soluble liquid moisturizer and emollient. As an ingredient in cosmetic formulations, RITACAM E-20 imparts a smooth and gentle skin feel. Due to its exceptional water retention properties, RITACAM E-20 finds uses in lotions, creams, after-shave products, bar soaps, bath products, hair wave products and cleansing products.

### GENERAL DATA:

Physical Form @ 25°C	Pale yellow viscous liquid
Odor	Faint, characteristic
CAS Number	68239-42-9

### SPECIFICATIONS:

Color, Gardner	1 Max.
Acid Value	1 Max.
Saponification Value	1 Max.
Iodine Value	1 Max.
Hydroxyl Value	205 – 225
Moisture, %	1 Max.
Heavy Metals	20 ppm Max.
Arsenic	2 ppm Max.
pH	5-7.5

The information contained herein is to our best knowledge true and accurate, but all recommendations or suggestions are made without guarantee, since the conditions of use are beyond our control. RITA CORPORATION disclaims any liability in connection with the use of these data or suggestions.