

# SPECIFICATIONS

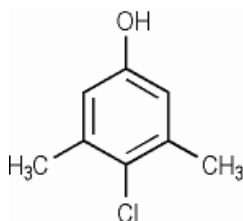


Product Code: \_\_\_\_\_

Date: 09/23/09 \_\_\_\_\_

## RITA PCMX INCI Name: Chloroxylenol

**DEFINITION:** Chloroxylenol is the organic compound that conforms to the formula:



### GENERAL DATA:

CAS Number:	88-04-0, 1321-23-9
EINECS Number:	201-793-8, 215-316-6
Appearance:	White to off white crystals or crystalline powder

### SPECIFICATIONS:

Appearance	White to off white crystal or crystalline powder
Assay	99% Min
Identification	Complies with USP
Melting Point	114 – 116°C
Water (Loss on drying)	0.5% Max.
Residue on Ignition	0.1% Max
Iron	0.01% Max
Related compounds	Complies with USP

The information contained herein is to our best knowledge true and accurate, but all recommendations or suggestions are made without guarantee, since the conditions of use are beyond our control. RITA CORPORATION disclaims any liability in connection with the use of these data or suggestions.