

SPECIFICATIONS

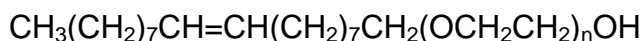


Product Code:

Revised: 04/08/11

RITOLETH 20
INCI Name: Oleth 20

DEFINITION: RITOLETH 20 is the polyethylene glycol ether of Oleyl Alcohol that conforms to the formula :



where n has an average value of 20

DESCRIPTION: RITOLETH 20 is an ethoxylate of high quality oleyl alcohol. This emulsifier is nonionic in nature and is compatible with most anionic, cationic and other nonionic surfactants. It is odorless and colorless in nature.

RITOLETH 20 is recommended for a wide variety of cosmetic and pharmaceutical preparations including gels, creams, lotions, shampoos, bath and hair products. It is excellent as a solubilizer for fragrance oils and other materials which are difficult to include in cosmetic formulations.

GENERAL DATA:

Physical Form @ 25°C	White/yellow solid
HLB	15.4
CAS Number	9004-98-2

SPECIFICATIONS:

Hydroxyl Value	45 - 70
Acid Value	0.5 Max
Moisture	3.0 Max

The information contained herein is to our best knowledge true and accurate, but all recommendations or suggestions are made without guarantee, since the conditions of use are beyond our control. RITA CORPORATION disclaims any liability in connection with the use of these data or suggestions.